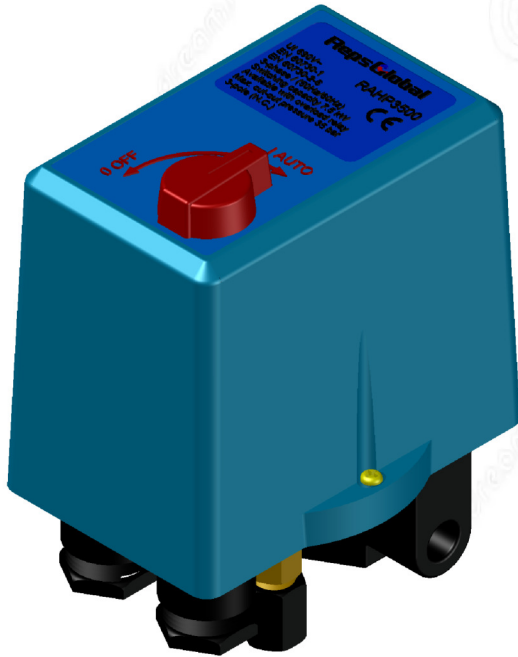


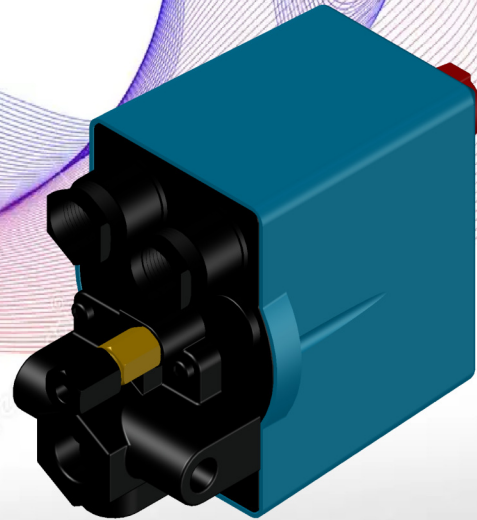


# RAHP-3500

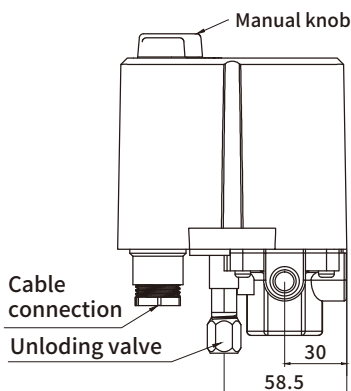
## Air Compressor Pressure Switch



**UI 690V~**  
**3-phase (50Hz/60Hz)**  
**Switching capacity 7.5 (11) kW**  
**Available with overload relay**  
**Max. cut- out pressure 35 bar**  
**3-pole (N.C.)**



RAHP3500 is a three phase pressure switch that can measure the pressure inside your air tank and shuts off your compressor when it reaches the air pressure you need. A pressure switch is a mechanical device that relies on air pressure to control the operation of an electric air compressor. This simple mechanism completes the circuit and allows power to the motor as long as system pressure is below a specified setting. The pressure switches used on air compressors could include a pressure switch relief valve which relieves head and line pressure, allowing for easier starts.



### Pressure range:

Model	Operating Pressure Range	Differential Range	Factory Setting
RAHP3500	1-6bar	0.7-2bar	2/3bar
	3-11bar	1.5-3.5bar	6/8bar
	6-16bar	2-7bar	9/12bar
	5-25bar	3-8bar	16/20bar
	12-35bar	3-8bar	25/30bar